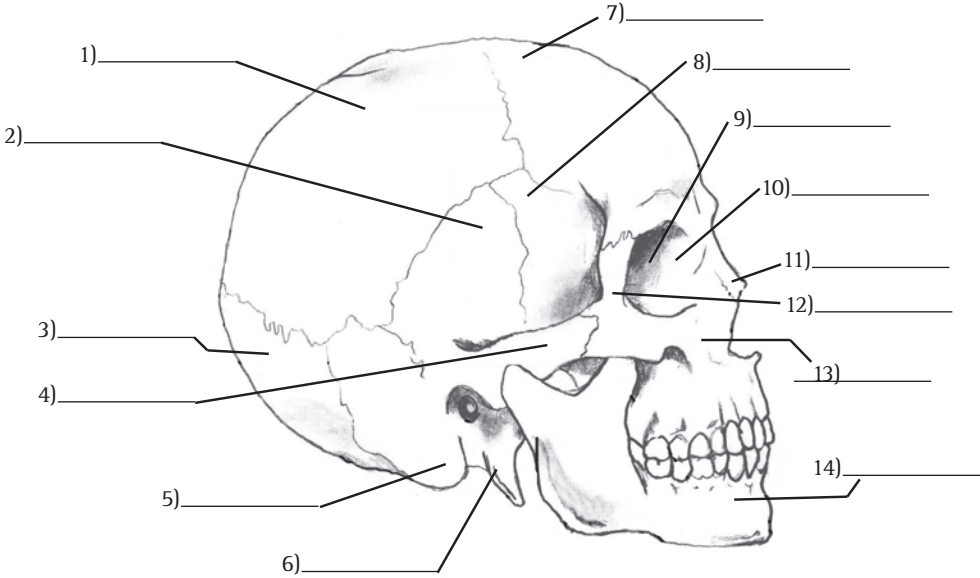


Skull and Face

- Frontal
- Nasal
- Styloid process
- Temporal
- Lacrimal
- Parietal
- Mandible
- Mastoid process
- Sphenoid
- Zygomatic
- Occipital
- Ethmoid
- Zygomatic arch
- Maxilla



Spinal Column

- Cervical vertebrae
- Lumbar Vertebrae
- Sacrum
- Thoracic vertebrae
- Intervertebral Disc
- Coccyx

